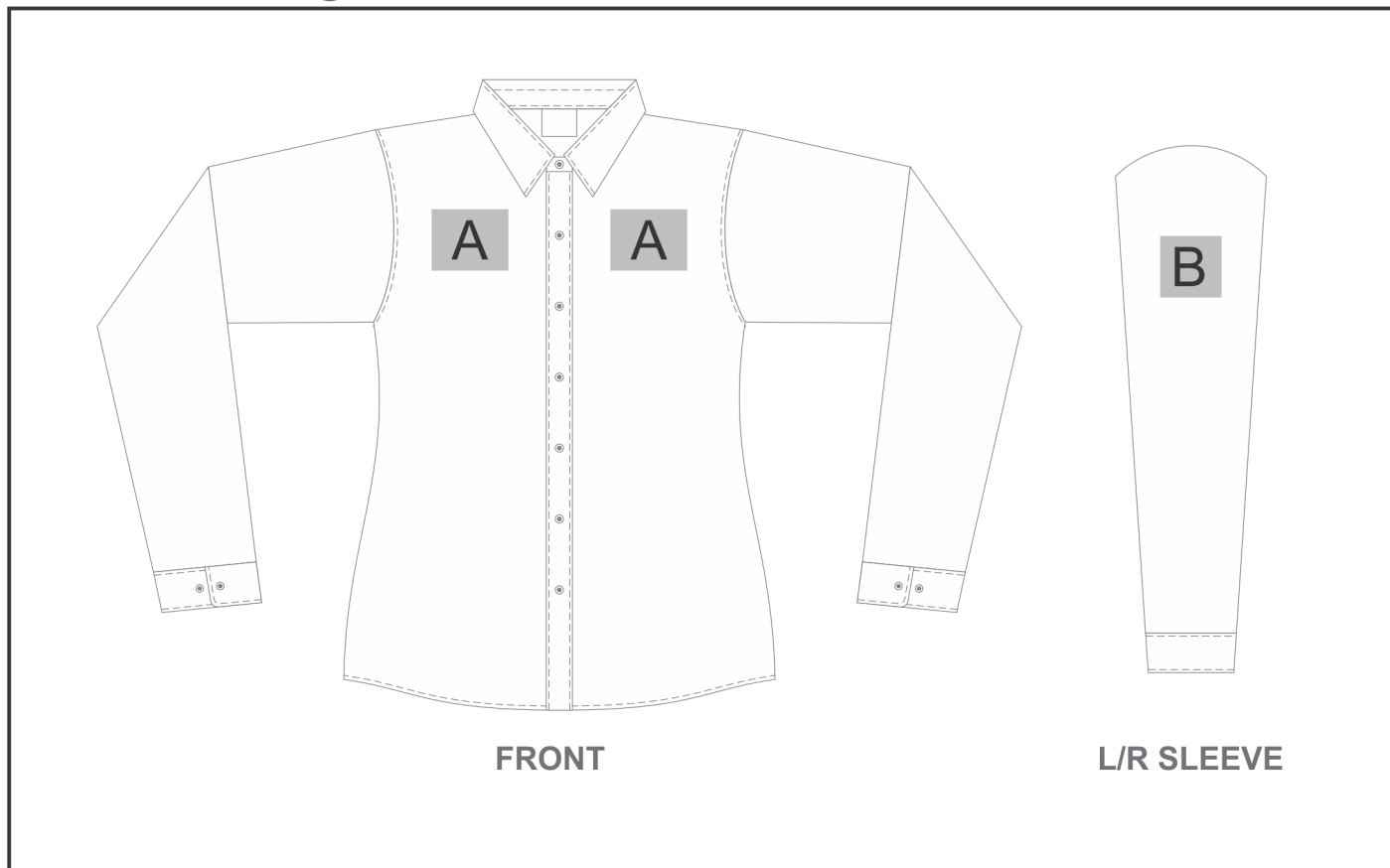


# CW-AL-182-A

## Ladies Long Sleeve Oxford Shirt



### Need to know:

- Includes 1-Position Digital Transfer (setup fees apply)
- DTC Inclusive Parameters: Left/Right Chest or Back = 100mm x 100mm.

## **Branding Options:**

### **Position A**

1. Digital Transfer Clothing A6 (DTC-A6)  
Full Colour  
Size: 80mm wide x 80mm high
2. Embroidery (EMB-A)  
N/A  
Size: 100mm wide x 80mm high
3. Screen Print (SP)  
1 Colour  
Size: 80mm wide x 80mm high
4. Silicone (STP-A)  
N/A  
Size: 30mm wide x 30mm high
5. Silicone (STP-B)  
N/A  
Size: 50mm wide x 50mm high
6. Silicone (STP-C)  
N/A  
Size: 80mm wide x 80mm high

### **Position B**

1. Digital Transfer Clothing A6 (DTC-A6)  
Full Colour  
Size: 80mm wide x 80mm high
2. Embroidery (EMB-A)  
N/A  
Size: 80mm wide x 60mm high
3. Screen Print (SP)  
1 Colour  
Size: 80mm wide x 80mm high
4. Silicone (STP-A)  
N/A  
Size: 30mm wide x 30mm high
5. Silicone (STP-B)  
N/A  
Size: 50mm wide x 50mm high
6. Silicone (STP-C)  
N/A  
Size: 80mm wide x 80mm high